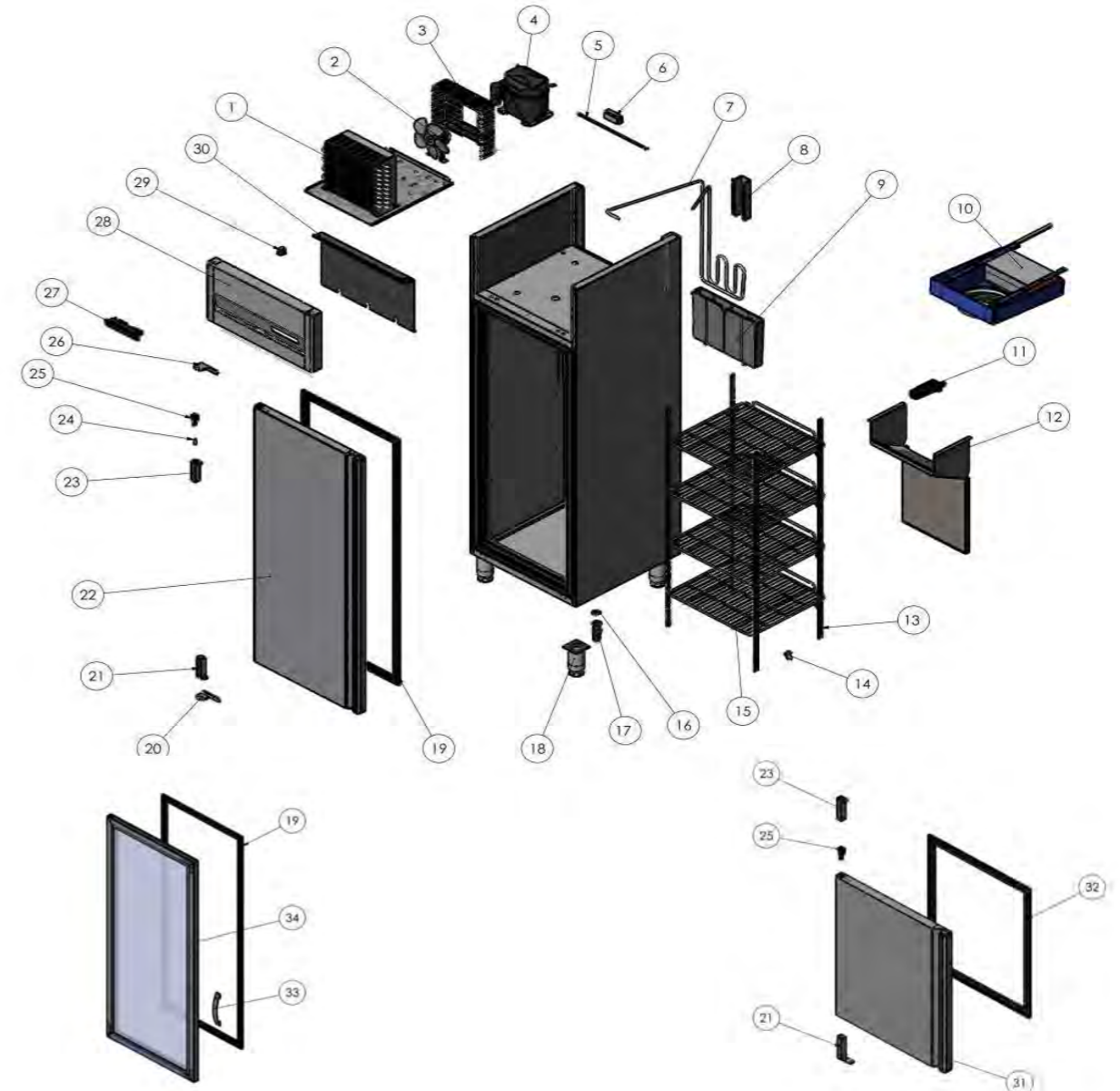


| Nº | DESCRIPCIÓN | DESCRIPTION | DAER-401 | DAEC-401 |
|------|--|---------------------------------------|------------|------------|
| 1 | CONDENSADOR | CONDENSER | 6029020116 | 6029020123 |
| 2 | VENTILADOR CONDENSADOR | CONDENSER FAN | 6021050113 | 6021050113 |
| | ASPA VENTILADOR DEL CONDENSADOR | CONDENSER FAN BLADE | 6021050129 | 6021050073 |
| 3 | REJILLA PROTECCIÓN VENTILADOR CONDENSADOR | GRILLE PROTECTION CONDENSER FAN | 6027090040 | 6027090040 |
| 4 | COMPRESOR | COMPRESSOR | 6021010226 | 6021010217 |
| 5 | LUZ DE LEDS | LEDS LIGHT | 6021290119 | 6021290119 |
| | LUZ DE LEDS AERE/AECE-401 | LEDS LIGHT AERE/AECE-401 | 6021290125 | 6021290125 |
| 6 | TRANSFORMADOR LEDS | LEDS TRANSFORMER | 6021290109 | 6021290109 |
| | TRANSFORMADOR LEDS AERE/AECE-401 | LEDS TRANSFORMER AERE/AECE-401 | 6021290110 | 6021290110 |
| 7 | TUBERÍA EVAPORACIÓN AUTOMÁTICA | AUTOMATIC EVAPORATION PIPING | A107010085 | A107010084 |
| 8 | OMEGA PROTECCION | PROTECTION SHEET | A109170362 | A109170362 |
| 9 | BANDEJA EVAPORACIÓN VERTICAL | VERTICAL EVAPORATION TRAY | 6003010495 | 6003010495 |
| 10 | EVAPORADOR | EVAPORATOR | 6029010217 | 6029010222 |
| 10.1 | VENTILADOR DEL EVAPORADOR | EVAPORATOR FAN | 6021050116 | 6021050116 |
| | ASPA VENTILADOR DEL EVAPORADOR | EVAPORATOR FAN BLADE | 6021050073 | 6021050073 |
| 10.2 | REJILLA PROTECCIÓN VENTILADOR EVAPORADOR | GRILLE PROTECTION EVAPORATOR FAN | 6003010475 | 6003010475 |
| 10.3 | RESISTENCIA DEL EVAPORADOR | EVAPORATOR RESISTANCE | X | 6021250107 |
| 11 | CANALIZADOR DE AGUA | WATER DRAIN | 6003010184 | 6003010192 |
| 12 | CANALIZADOR DE AIRE | AIR DRAIN | X | A109050952 |
| 13 | CREMALLERA INOX | STAINLED RACK | 6033210016 | 6033210016 |
| 14 | SOPORTE CREMALLERA | RACK SUPPORT | 6033210019 | 6033210019 |
| 15 | ESTANTE PARRILLA | LAMINATED SHELF | 6027010127 | 6027010127 |
| 16 | TAPÓN DESAGUE 3/4 | DRAIN PLUG 3/4 | 6003010262 | 6003010262 |
| 17 | DESAGUE 3/4 | DRAIN 3/4 | 6003010326 | 6003010326 |
| 18 | PATA REGULADORA | ADJUSTABLE FEET | 6007050017 | 6007050017 |
| 19 | BURLETE 1354X550 mm | SEAL 1354X550 mm | 6045010164 | 6045010164 |
| 20 | SOPORTE BISAGRA INFERIOR IZQ. | LOWER LEFT HINGE SUPPORT | 6033010098 | 6033010098 |
| 21 | BISAGRA DE TORSIÓN | TORSION HINGE | 6033010100 | 6033010100 |
| 22 | PUERTA 1405X598 mm | DOOR 1405X598 mm | A169010080 | A169010080 |
| 23 | ALOJAMIENTO BISAGRA | HOUSING HINGE | 6003010036 | 6003010036 |
| 24 | EJE 3X10 | SHAFT 3X10 | 6033090064 | 6033090064 |
| | EJE 3X10 INTERMEDIO AER/AEC-402 | SHAFT 3X10 AER/AEC-402 | 6033090068 | 6033090068 |
| 25 | CAJA ALOJAMIENTO EJE | SPLINDE SUPPORT | 6003010136 | 6003010136 |
| 26 | SOPORTE BISAGRA SUPERIOR IZQ | UPPER LEFT HINGE SUPPORT | 6033010110 | 6033010110 |
| 27 | TERMOSTATO | THERMOSTAT | 6021350114 | 6021350116 |
| | SONDA | PROBE | 6021350021 | 6021350021 |
| 28 | CABEZA CUADRO DE MANDOS | CONTROL PANEL | A177010208 | A177010208 |
| 29 | MICRORRUPTOR COMUTADO | COMMUTATOR SWITCH | 6021130032 | 6021130032 |
| 30 | TAPA CUADRO DE MANDOS | CONTROL PANEL COVER | A109170204 | A109170204 |
| 31 | PUERTA 695x598 mm AER/AEC-402 | DOOR 695x598 mm AER/AEC-402 | A169010082 | A169010082 |
| 32 | BURLETE 644x550 mm AER/AEC-402 | SEAL 644x550 mm AER/AEC-402 | 6045010167 | 6045010167 |
| 33 | TIRADOR PUERTA DE CRISTAL AERE/AECE-401 | HANDLE DOOR AERE/AECE-401 | 6033010619 | 6033010619 |
| 34 | PUERTA DE CRISTAL AERE/AECE-401 | GLAZING DOOR AERE/AECE-401 | A169050012 | A169050017 |

Gas R-290



PUERTA DE CRISTAL MODELO **AERE/AECE-401**
GLAZING DOOR MODEL **AERE/AECE-401**

PUERTA MODELO **AER/AEC-402**
DOOR MODEL **AER/AEC-402**

| Nº | DESCRIPCIÓN | DESCRIPTION | DAER-401* | DAEC-401** |
|------|---|---------------------------------|------------|------------|
| 1 | CONDENSADOR | CONDENSER | 6029020008 | 6029020013 |
| 2 | VENTILADOR CONDENSADOR | CONDENSER FAN | 6021050004 | 6021050077 |
| 3 | REJILLA PROTECCIÓN VENTILADOR CONDENSADOR | GRILLE PROTECTION CONDENSER FAN | 6027090040 | 6027090040 |
| 4 | COMPRESOR | COMPRESSOR | 6021010204 | 6021010002 |
| 7 | TUBERÍA EVAPORACIÓN AUTOMÁTICA | AUTOMATIC EVAPORATION PIPING | A107010074 | A107010074 |
| 10 | EVAPORADOR | EVAPORATOR | 6029010160 | 6029010200 |
| 10.1 | VENTILADOR DEL EVAPORADOR | EVAPORATOR FAN | 6021050072 | 6021050072 |

*Gas opcional R-134a (Opcional gas R-134a)

**Gas opcional R-449A (Opcional gas R-449A)